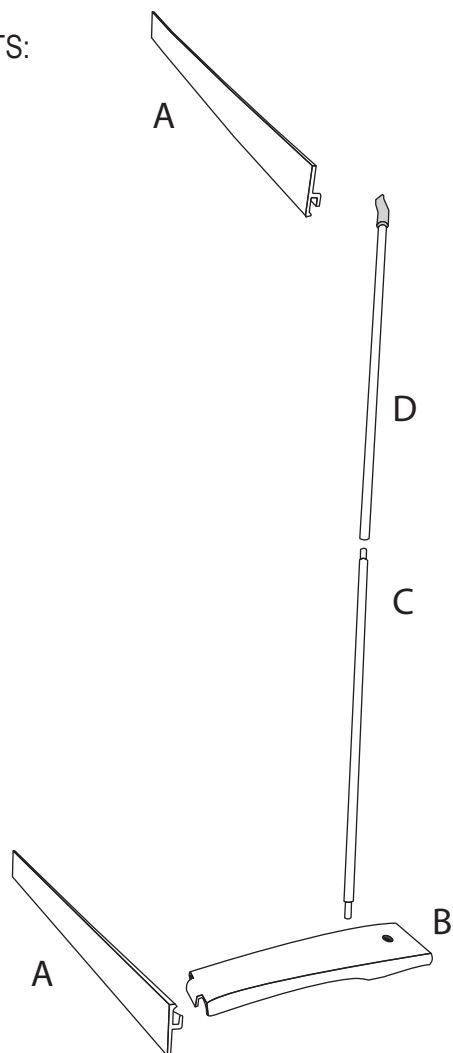
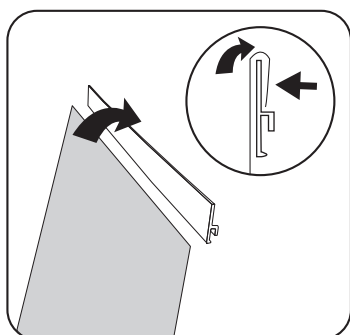


ASSEMBLY INSTRUCTIONS

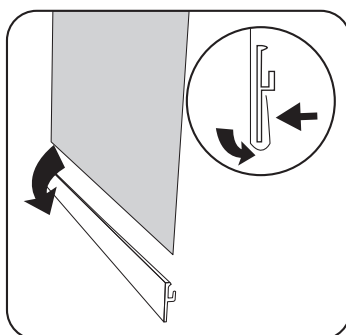
COMPONENTS:



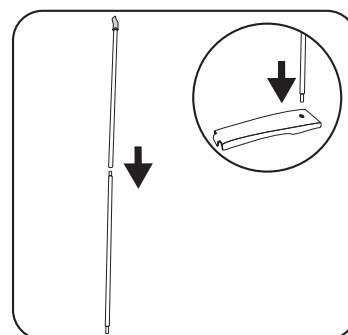
<p>A</p> <p>2 PCS</p>	<p>B</p> <p>1 PC</p>
<p>C</p> <p>1 PC</p>	<p>D</p> <p>1 PC</p>



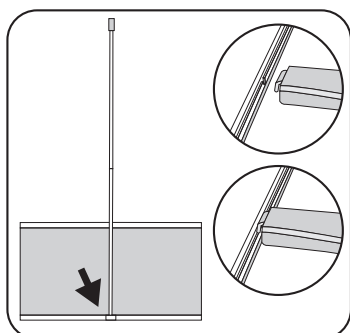
- 1 Remove the paper covering the adhesive on one of the adhesive rails. Attach the top of the graphic as shown above.



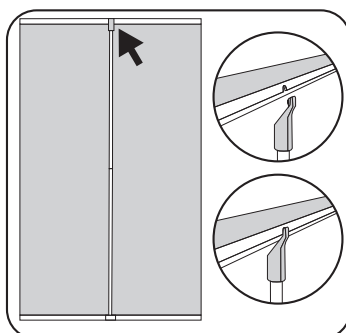
- 2 Remove the paper covering the adhesive on one of the adhesive rails. Attach the bottom of the graphic as shown above.



- 3 Assemble the support pole and place the bottom in the holder on the base.



- 4 Clip the base into the middle of the channel on the adhesive bar attached to the bottom of the graphic.



- 5 Clip the top of the support pole into the middle of the adhesive bar attached to the top of the graphic.